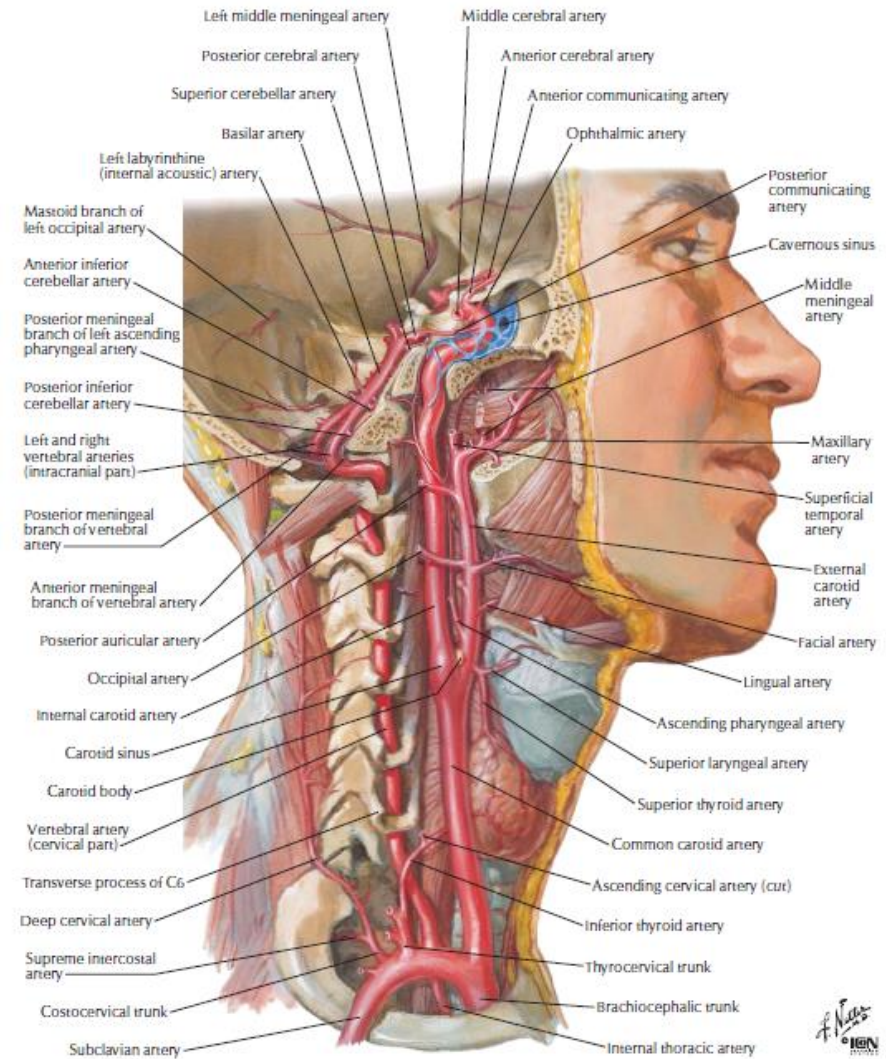
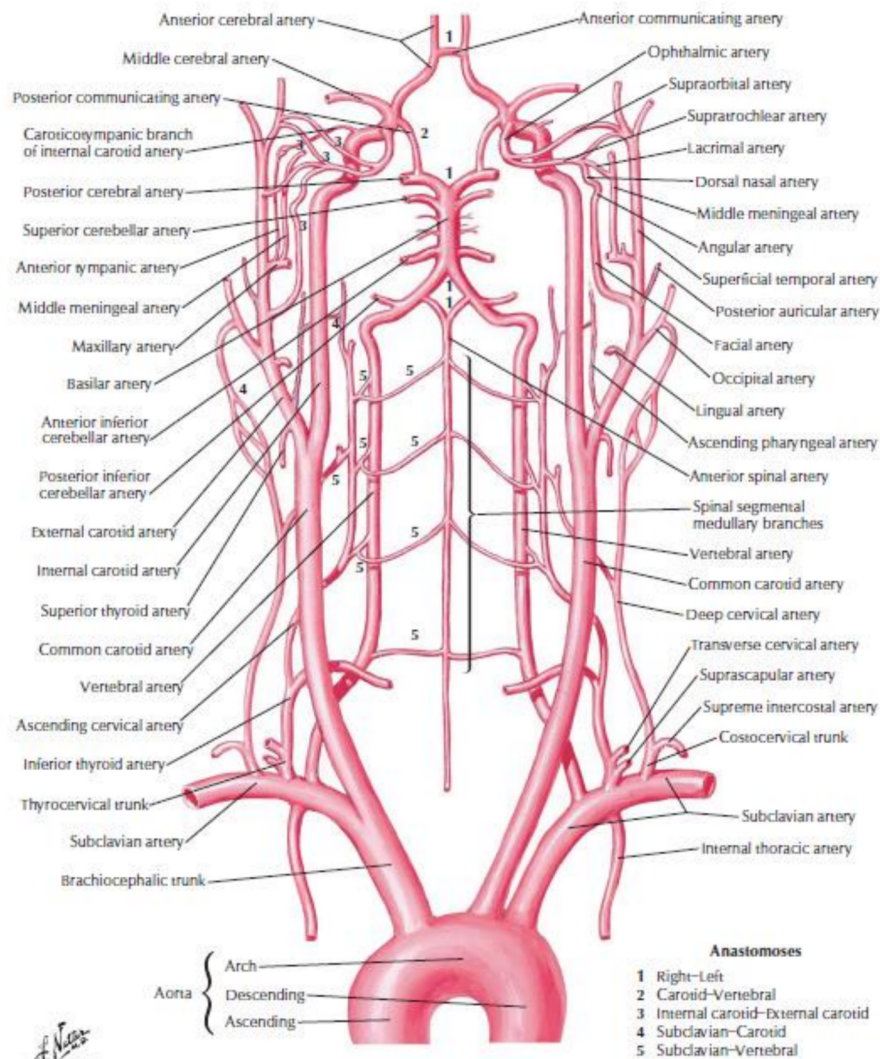
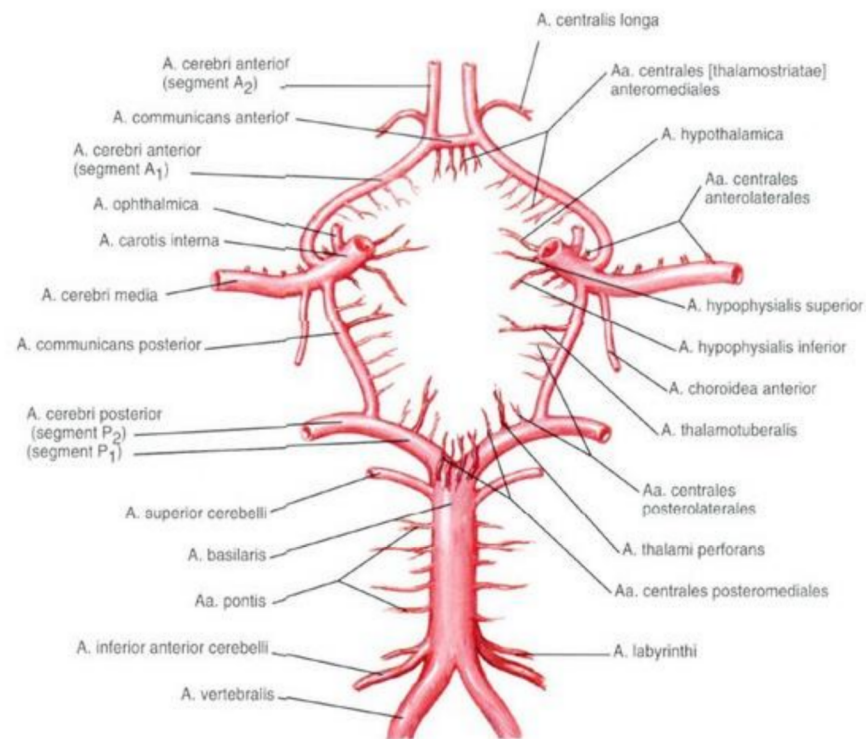
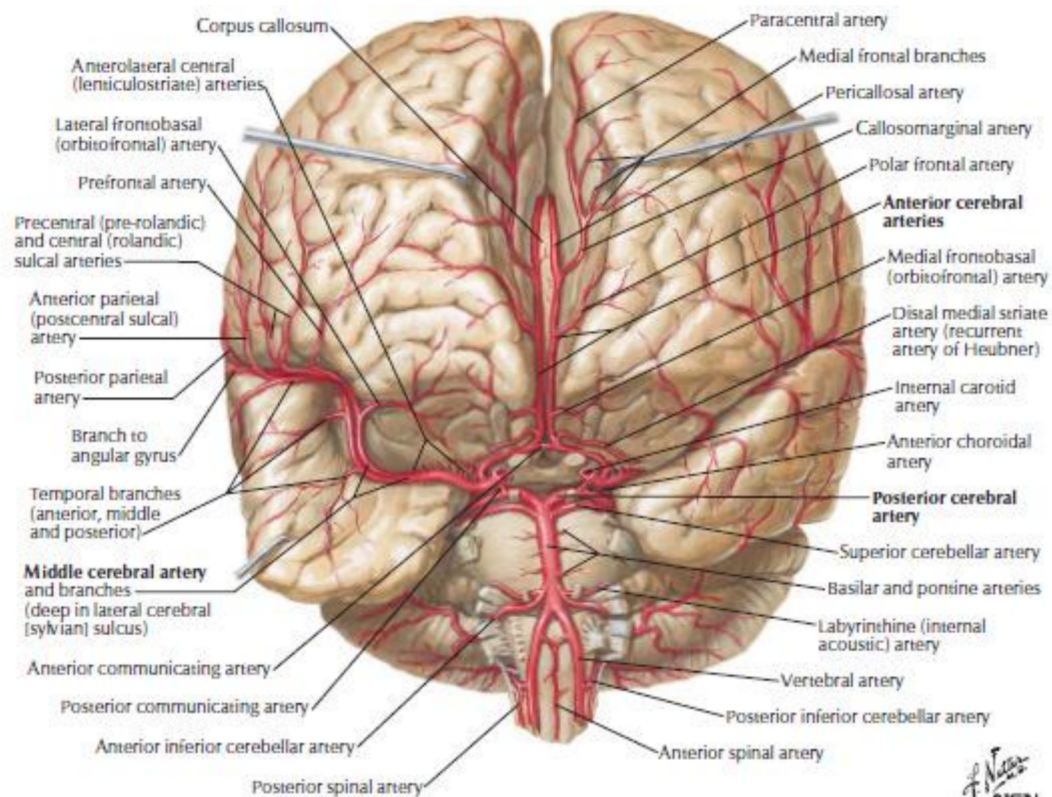


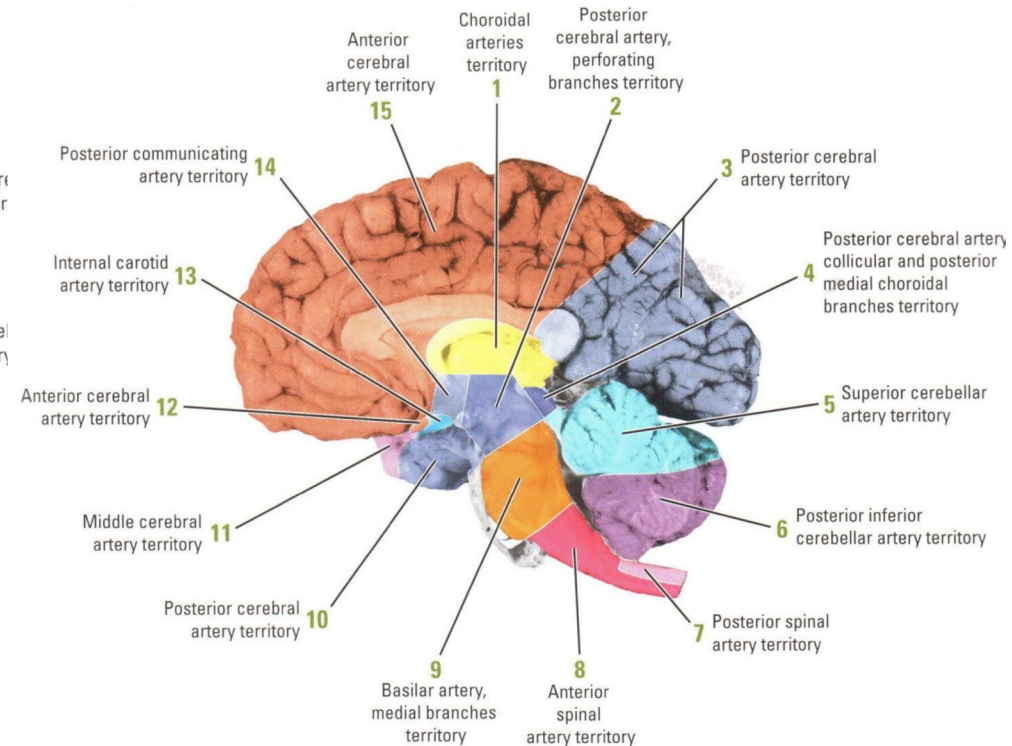
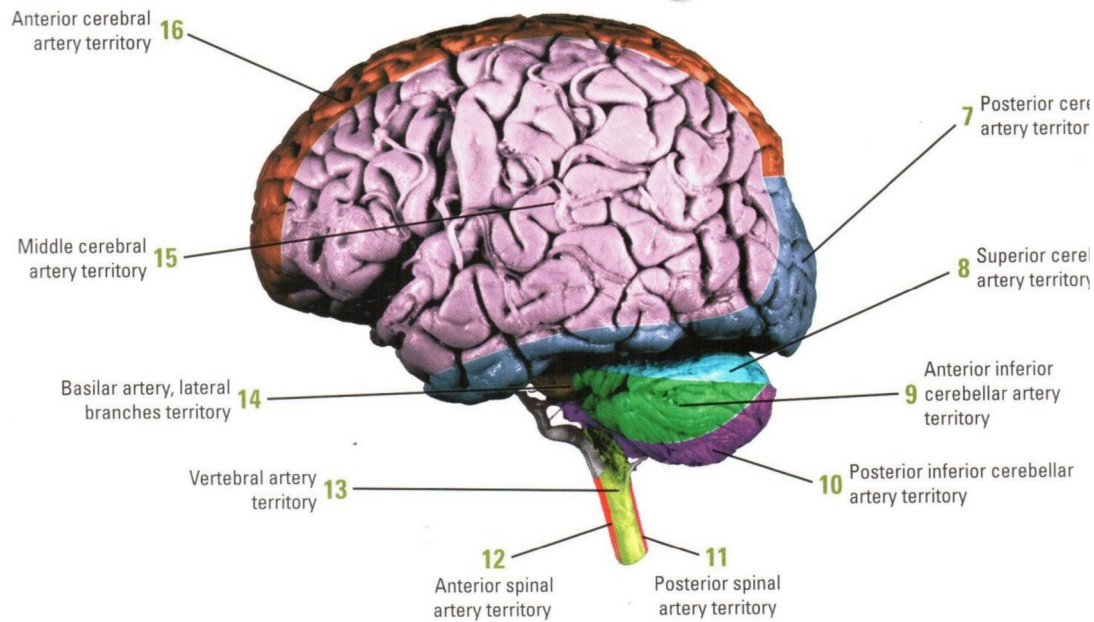
Кровоснабжение головного мозга



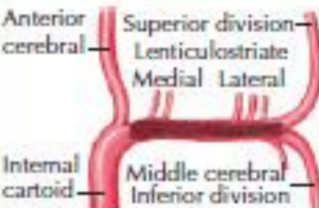














Кровоснабжение головного мозга



Кровоснабжение головного мозга



Влияние места окклюзии на характер очага

Lesion	Artery occluded	Infarct, surface	Infarct, coronal section	Clinical manifestations
Middle cerebral artery	Entire territory  Anterior cerebral Superior division Lenticulostrate Medial Lateral Internal carotid Middle cerebral Inferior division			Contralateral gaze palsy, hemiplegia, hemisensory loss, spatial neglect, hemianopsia Global aphasia (if on left side) May lead to decreased consciousness and even coma secondary to edema
	Deep 			Contralateral hemiplegia, hemisensory loss Transcortical motor and/or sensory aphasia (if on left side)
	Parasyllvian 			Contralateral weakness and sensory loss of face and hand Conduction aphasia, apraxia, and Gerstmann syndrome (if on left side) Constructional dyspraxia (if on right side)
	Superior division 			Contralateral hemiplegia, hemisensory loss, gaze palsy, spatial neglect Broca aphasia (if on left side)
	Inferior division 			Contralateral hemianopsia or upper quadrantanopsia Wernicke aphasia (if on left side) Constructional dyspraxia (if on right side)

В поисках инструмента для автоматического описания васкулярного бассейна ишемии

www.nature.com/scientificdata

scientific **data**



OPEN

Digital 3D Brain MRI Arterial Territories Atlas

DATA DESCRIPTOR

Chin-Fu Liu^{1,2}, Johnny Hsu³, Xin Xu³, Ganghyun Kim^{1,4}, Shannon M. Sheppard^{5,8}, Erin L. Meier⁶, Michael I. Miller^{1,2,7}, Argye E. Hillis^{8,9} & Andreia V. Faria³✉

В поисках инструмента для автоматического описания васкулярного бассейна ишемии

